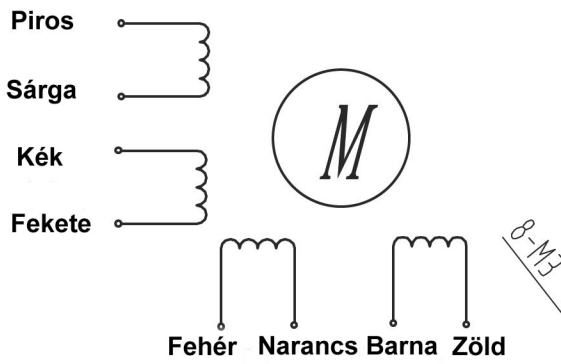


HIGH TORQUE HYBRID STEPPING MOTOR SPECIFICATIONS

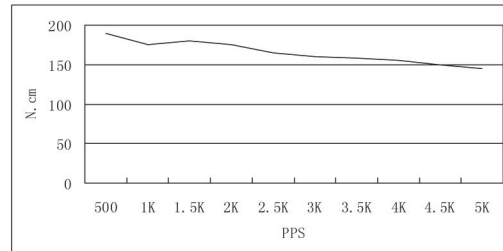
Part No	Connection Type	Phase	Degree	Voltage V	Current A	Resistance Ohm	Inductance mH	Holding Torque Nm	Rotor Inertia g.cm ²	Weight KG
23SH-86-042-8W-F8.F6.35-3.1	Unipolar	4	1.8	3.9	3	1.3	3.2	2.15	840	1.4
	Bipolar(S)	2		5.46	2.1	2.6	12.8	3		
	Bipolar(P)	2		2.73	4.2	0.65	3.2	3		

● Wiring Diagram :

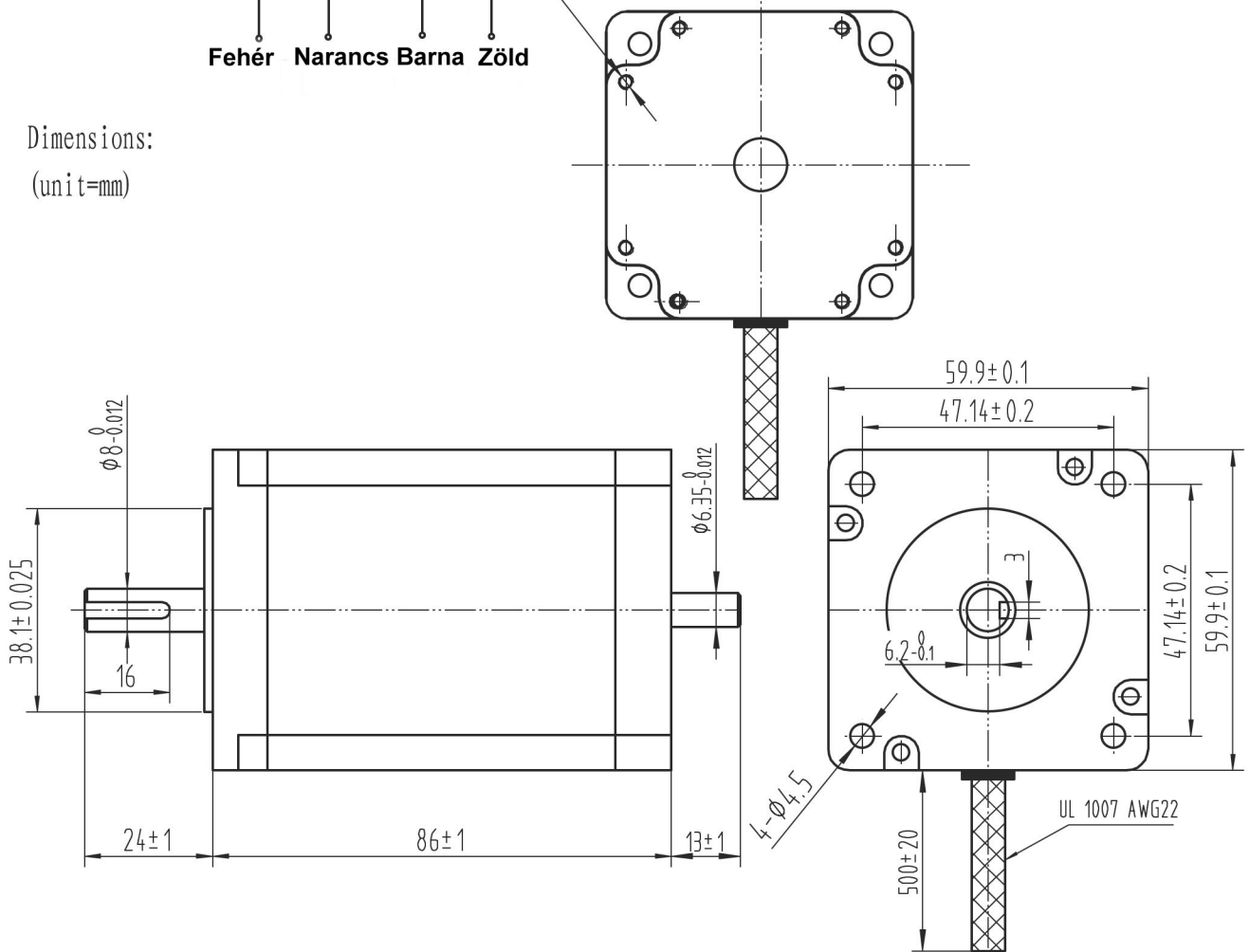


● Pull out torque curve :

VOLTAGE: 60VDC, CONSTANT CURRENT: 4.2A, HALF STEP



● Dimensions:
(unit=mm)



					23SH-86-042-8W-F8.F6.35-3.1	TECHNICAL CONDITIONS
REV	REVISIONS	DESCRIPTION	BY	DATE		
DRAW						
CHECK						
APPROVE						